

# LEDVANCE Luminaires Installation Guide

## EDGE-LIT PANEL



The Edge-Lit Panels are environmentally preferable LED alternatives to traditional fluorescent luminaires, offering up to 47% in energy savings. Ideal in place of traditional luminaires, or as new installations, the Edge-Lit Panels are offered in three sizes for illuminating offices, retail or hospitality areas.

For warranty coverage, please register at [www.sylvania.com/warrantyregistration](http://www.sylvania.com/warrantyregistration).

### **⚠ WARNING**

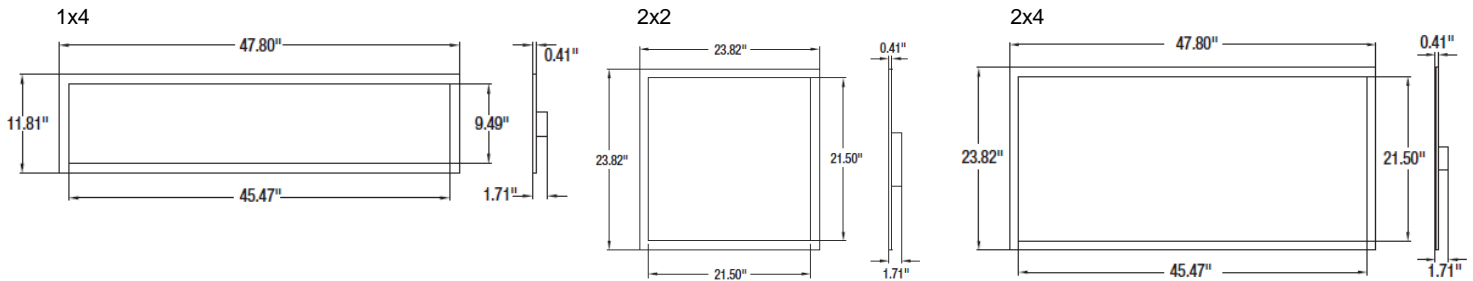
#### **PLEASE READ ALL INSTRUCTIONS BEFORE ATTEMPTING INSTALLATION**

- TO PREVENT PERSONAL INJURY OR PRODUCT DAMAGE ONLY LICENSED ELECTRICIANS SHOULD PROVIDE ALL INSTALLATION SERVICES.
- TO AVOID ELECTRIC SHOCK OR COMPONENT DAMAGE DISCONNECT POWER BEFORE ATTEMPTING INSTALLATION OR SERVICING.
- THIS PRODUCT MUST BE INSTALLED IN ACCORDANCE WITH THE NATIONAL ELECTRIC CODE (NEC) AND ALL APPLICABLE FEDERAL, STATE AND LOCAL ELECTRIC CODES AND SAFETY STANDARDS.
- USE CAUTION WHEN HANDLING THIS PRODUCT DURING OR AFTER OPERATION AS IT MAY BECOME HOT AND CAUSE BURNS. DISCONNECT PRODUCT AND ALLOW COOLING PRIOR TO SERVICING.
- ANY ALTERATION OR MODIFICATION OF THIS PRODUCT IS EXPRESSLY FORBIDDEN AS IT MAY CAUSE SERIOUS PERSONAL INJURY, DEATH, PROPERTY DAMAGE AND/OR PRODUCT MALFUNCTION.
- TO PREVENT PRODUCT MALFUNCTION AND / OR ELECTRICAL SHOCK THIS PRODUCT MUST BE PROPERLY GROUNDED.
- THIS LUMINAIRE IS DESIGNED TO OPERATE IN AMBIENT TEMPERATURES RANGING FROM -4°F TO +104°F (-20°C TO +40°C) EMERGENCY BACKUP +32°F TO +104°F (0°C TO +40°C) AND TO BE MOUNTED WITH THE LEDS FACING DOWN.

## SAFETY PRECAUTION:

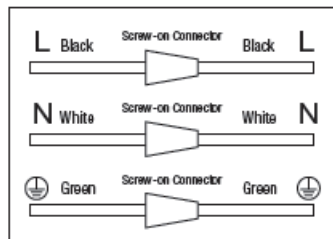
**IMPORTANT: READ CAREFULLY BEFORE INSTALLING THE FIXTURE. RETAIN FOR FUTURE REFERENCE.**

**GENERAL:** Upon receipt of the fixture, thoroughly inspect for any freight damage which should be brought to the attention of the delivery carrier.

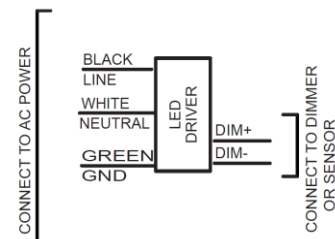


## INSTALLATION:

1. Disconnect power to fixtures.
2. Remove ceiling tile(s) where the Edge-Lit Panel will be installed.
3. Raise luminaire into hole in the ceiling and above the T-bar.
4. Slowly rest luminaire on T-bar and make sure the fixture fits appropriately before wiring.
5. Remove adjacent ceiling tile to make electrical connections.
6. Connect the incoming electrical wires to the set of power wires black to black (hot), white to white (neutral) and green to green (ground). (See Wiring Diagram 1)
7. Installation is now complete. Turn on the power at circuit breaker or fuse box then turn the light switch to power the fixture.



Wiring Diagram 1



Wiring Diagram 2

## TROUBLE SHOOTING CHECKLIST : If the light does not work.

- Check your power source.
- Check electrical connections.

### ADDING A WALL DIMMER

This fixture is compatible with 0-10V output dimming controls. Using the 0-10V dimming the light output will range from 10% - 100%. To get to 0% light output (OFF) it is necessary to disconnect the input power from the LED drivers. This can easily be done by inserting a relay/switch between the line and load connectors inside the fixture. Connect dimmer or wall switch to dimming wires on driver. (See Wiring Diagram 2)

## CLEANING AND MAINTENANCE



- To maintain the fixture efficacy occasional cleaning of the outer lens surface may be needed.
- Use a mild soap or detergent, which is essentially neutral pH (pH approximately 6 to 8), nonabrasive, and which contains no chlorinated or aromatic hydrocarbons.
- Wash thoroughly, using a soft cloth.
- Rinse with clean, cold water and wipe dry.